



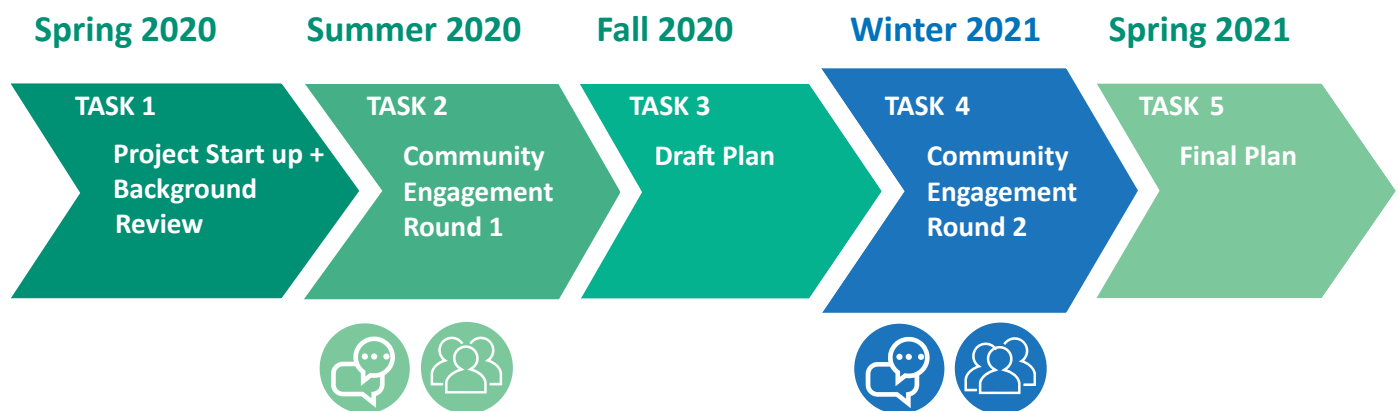
REGIONAL PARKS PLAN 2020-2030

What is the Regional Parks Plan?

The Regional District of Fraser Fort George has prepared a Draft Regional Parks Plan to provide a clear direction and priorities for regional parks for the period 2020 to 2030. The plan outlines what we have, where we want to go, and how to make that happen.



What is the project timeline?



How can I participate?

Your input is essential! We need your help to ensure the Draft Plan reflects our region's needs and aspirations for regional parks. Please share your thoughts by participating in our online survey.

Online Survey: Open until February 5, 2021

Click here for the survey!
www.surveymonkey.com/r/RDFFGparksplan2

How will my feedback be used?

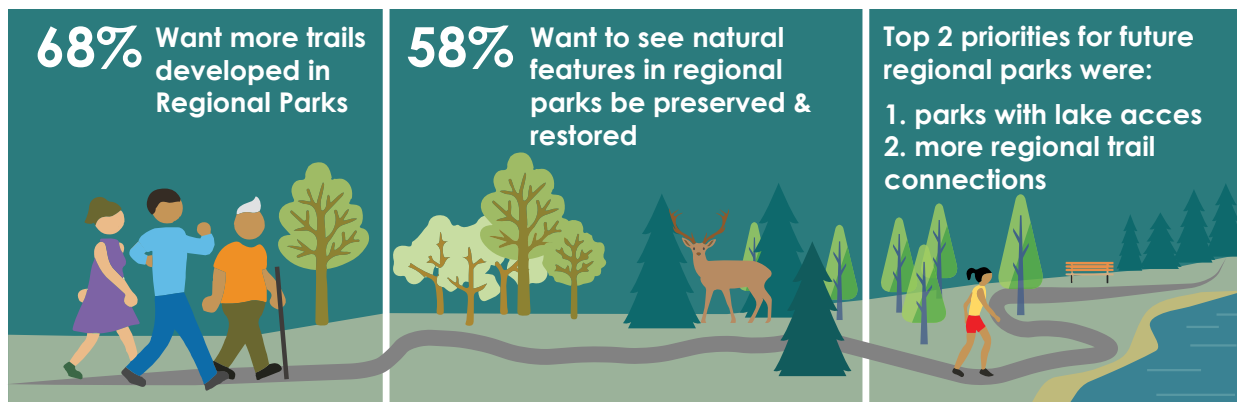
Public and stakeholder feedback will be used to confirm the vision and seek feedback to prioritize and evaluate draft recommendations and policies of the Draft Regional Parks Plan.





REGIONAL PARKS PLAN 2020-2030

What We Heard - Round 1



* from online survey Sept 2020



REGIONAL PARKS PLAN 2020-2030

Vision

The RDFFG has a diverse, accessible and high quality Regional Parks system that:

- Secures, protects and stewards lands and waterbodies of recreational, environmental and historic value to the region and its communities;
- Provides day-use facilities that support rewarding outdoor recreational opportunities;
- Preserves the environmental and heritage values represented in the parks;
- Promotes the history and culture of Indigenous peoples in the region;
- Moves toward an interlinked system of public trails and open spaces in coordination with other park and trail systems in the region;
- Fosters understanding and appreciation of the Region's natural and cultural assets;
- Incorporates the RDFFG's climate action targets; and
- Enhances the quality of life, health and wellbeing of current and future residents and visitors of the region.



REGIONAL PARKS PLAN 2020-2030



Draft General Park System Recommendations:

Policies & Bylaws

1. Review and update the Regional Parks Bylaw.

Accessibility

1. Ensure all Regional Parks have an accessible outhouse.
2. Ensure parking lots have accessible parking stalls identified near the park entrance.

Education & Interpretation

1. Support the enhancement of existing trails, and development of new trails within Regional Parks to create a variety of loops.
2. Add interpretive signage that offers opportunities to learn about historical and cultural resources in the region.
3. Support the hosting of educational and interpretive talks in Regional Parks.

Stewardship

1. Ensure all Regional Parks have recycling bins in addition to standard waste receptacles.

Marketing & Promotion

1. Update brochure that notes facilities available at each Regional Park.

Indigenous Relations

1. Engage with First Nations to incorporate informational and interpretive signage that reflects First Nations cultural values, historical trails, and other traditional uses within the region.
2. Ensure park signage acknowledges the traditional territories of local First Nations.





REGIONAL PARKS PLAN 2020-2030

Existing Regional Parks

Park	Draft Park Development Recommendations
	<ul style="list-style-type: none"> Create more accessible grades to access the dock and picnic areas. (High)
BERMAN LAKE	<ul style="list-style-type: none"> Upgrade trails, including repair of wooden stairs, bridge railings, and trail surfaces. (Medium)
	<ul style="list-style-type: none"> Install a viewing platform along the wetland with interpretive signage. (Low)
CEDARSIDE	<ul style="list-style-type: none"> Widen the trail to the beach and develop a loop trail with interpretive signage. (High)
	<ul style="list-style-type: none"> Install additional barriers to discourage access along steep banks to beach. (High)
GEORGE HICKS	<ul style="list-style-type: none"> Support the extension of a trail from the viewing platform to the North Thompson Highway on the north side of Swift Creek. (Med)
GISCOME PORTAGE (HUBLE HOMESTEAD HISTORIC SITE)	<ul style="list-style-type: none"> Prepare a park management plan that defines a mutually-agreed vision for the park, identifies how the RDFFG will work with the Huble Homestead / Giscome Portage Heritage Society and other interested organizations to achieve the long-term vision, and clarifies roles, responsibilities, and resources needed to achieve that vision. (High)
	<ul style="list-style-type: none"> Support trail enhancements on the site such as exploring alternatives for the riverfront trail and creating rest points with benches along the trail from the parking lot to the Huble Homestead entrance. (Medium)
HAROLD MANN	<ul style="list-style-type: none"> Monitor and assess the impacts of the shoreline mitigation work conducted in 2020. Consider expanding as required to mitigate seepage. (High)
	<ul style="list-style-type: none"> Improve trails along the creek and bog with sections of boardwalk, and informational and interpretive signage to highlight the flora and fauna of the area. (Medium)
JOHN DAHL	<ul style="list-style-type: none"> In consultation with the District of Mackenzie consider handing John Dahl over to the District for use as a community park and acquiring another regional park site in the Mackenzie area, if this would better meet the Regional District and area's park needs. (Med)
	<ul style="list-style-type: none"> Install a trailhead kiosk with information on trail use, etiquette and maps. (Med)
	<ul style="list-style-type: none"> Consult with the District of Mackenzie on options to improve directional signage to the park entrance. (Low)



REGIONAL PARKS PLAN 2020-2030

Existing Regional Parks (continued)

Park	Draft Park Development Recommendations
KOENEMAN	<ul style="list-style-type: none"> • Work together with local horse riding, hiking and biking groups to explore opportunities to make the park a hub for trails. (High) • Develop updated interpretive signage within the Park in consultation with the Village of McBride. (Med) • Consult with the community to define levels of community interest in using the building, and supporting the long-term maintenance of this heritage structure. Apply for funding to complete renovations once community support becomes evident. (Med)
KRISTIAN WINTHER	<ul style="list-style-type: none"> • Install interpretive signage along the loop trail. Install signage and/or barriers where riverbank erosion is severe along the trail. (High)
MCMILLAN CREEK	<ul style="list-style-type: none"> • Post warning and walking safety etiquette signage at the parking lot for hikers using the road. (High) • Perform selective pruning and removal of dead and dangerous trees alongside the road. (High) • Extend fenceline barriers and update interpretive signage to enhance the viewpoint. (Med)
NESS LAKE	<ul style="list-style-type: none"> • Monitor the effectiveness of the shoreline mitigation erosion project and conduct enhancements as necessary. (High) • Consider further improvements to the shoreline to improve access to the water for swimming. (High) • Install signage and bollards or barriers at access points along the outer trail to discourage use by motorized vehicles. (Med)
WILKINS	<ul style="list-style-type: none"> • Repair the concrete boat launch. (High) • Repair worn or missing timber elements, including bridge decking, loose railings and picnic tables. Add railings to the boardwalk/bridge on the trail to Miworth Road. (High) • Create continuous trail access from the park gate to the river. (Med)



REGIONAL PARKS PLAN 2020-2030

Potential Future Regional Park Sites



Potential Future Regional Park Sites in Underserved Park Planning Areas:

Electoral Area 'D' (Tabor Lake-Stone Creek)

- Tabor Lake
- Stoner / Stone Creek / South of Stoner on the Fraser River

Electoral Area 'E' (Woodpecker-Hixon)

- Woodpecker Heritage Church
- Hixon Creek Falls

Underserved Park Planning Areas

